

# HuaTian

HPT-6

## Introduction:

HPT-6 pressure transducers are based on piezoresistive silicon pressure sensor packaged in 316L stainless steel housing. The sensing package utilizes silicone oil to transfer pressure from the 316L stainless steel diaphragm to the sensing element. Through strict component making, semi-finished product and all-finished product testing and aging, the transmitter is stable and reliable, having excellent flexibility, sensitivity and diversity. Various amplified output with 4~20mA, 0.5~4.5V, 0~5V. Various pressure ports, both cable and connector outlets are available; For maximum meeting customer's needs, Special design will be provided if required.

## Features:

- Flush diaphragm, sanitation ,anti-corrosive type are available
- Piezoresistive and ceramic sensor optional
- Full stainless steel design
- SSI type optional

## Applications:

- Hydraulic/Pneumatic Control Systems
- Energy and Water Management
- Pressure calibration system
- Process control
- Ship and aircraft application



## Specifications( Refer to 25℃ )

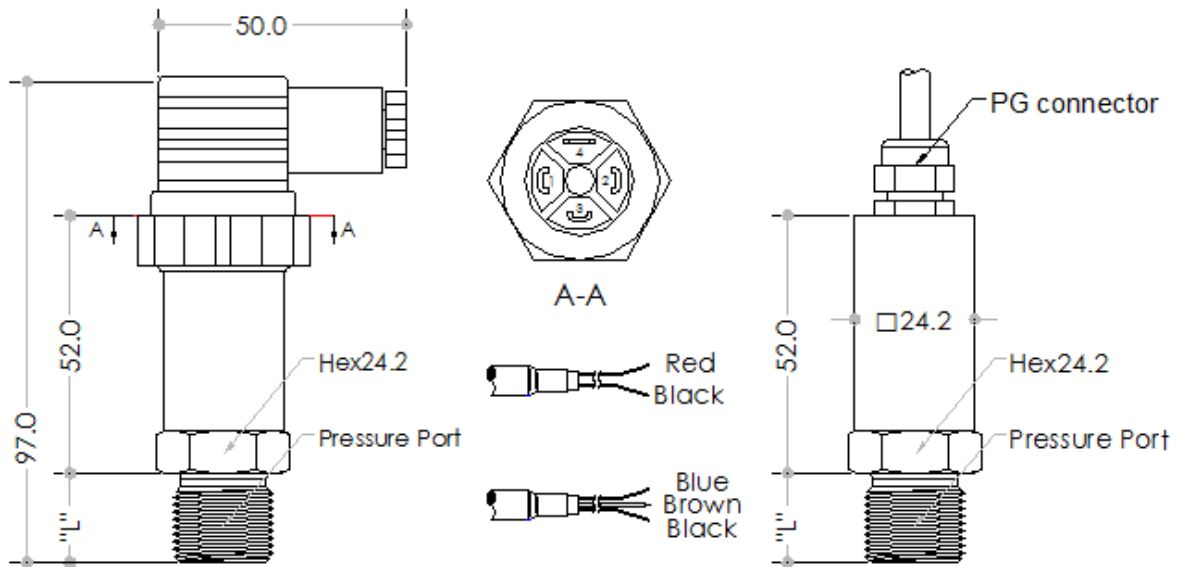
Sensor Type	Piezoresistive/ceramic	Operable Temp. (℃)	-20~85℃
Wetted parts	316L Stainless steel	Storage Temp (℃)	-40℃-125℃
Housing	304 Stainless steel	Long term stability	±0.25%FS(Typical)
Sealing method	O-ring	Zero error (%FS)	±0.5%
Power supply	12-36V DC(24V standard)	Full range error (%FS)	±0.5%
Protection grade	IP65	Thermal Zero drift (%FS)	±1.0%
Pressure port	See below code description	Thermal Span drift (%FS)	±1.0%
Accuracy (Combined Non-linearity, Hysteresis and Non-repeatability) %FS	X Customized	Input Voltage / Output	See below code description
	0.25%(Typical)	Response	1KHz
Pressure Range(Bar)	-0.1...0...600Bar	Insulation	Min1MΩ @250VDC&25℃
		Shock	100g, 11msec
Over pressure	3X Full Range	Noise	< 2m VRMS
Burst pressure	4X Full Range or 20kpsi which is less	Pressure reference	Absolute /Vent Gauge/ Seal Gauge
Life	>10 <sup>7</sup> Full Range Pressure	Weight	85g Max.

■ Thermal drift refer to 25℃ output

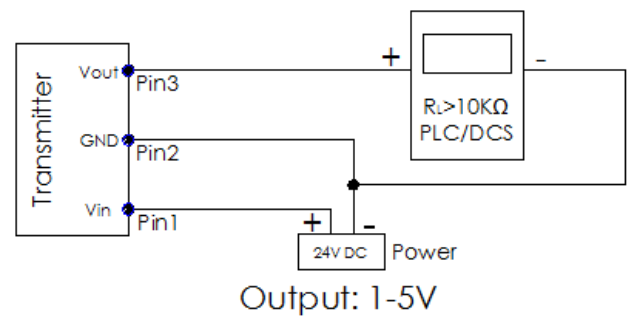
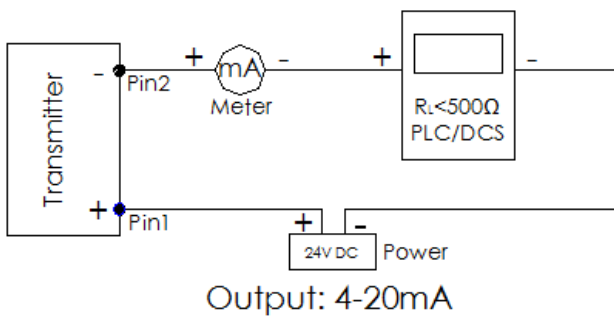
**HuaTian** **HPT-6**

HPT-6 pressure transducer model code							
Model	Description						
HPT-6	General purpose pressure transmitter						
HPT-6SS	Range/Code	Pressure unit					
	0-X P	Pa					
	0-X K	Kpa					
	0-X B	Bar					
	0-X M	Mpa					
	0-X S	PSI					
	0-X m	Mh2o					
		Code	Output Signal				
		E	4-20mA two wire				
		F	1-5V				
		J	0-5V				
		Q	0-10V				
		Z	others				
			Code	Accuracy (%FS)			
			J1	0.1			
			J2	0.25			
			J3	0.5			
			Code	Pressure port			
			C1	M20*1.5			
			C2	M14*1.5			
			C3	G1/2			
			C4	G3/8			
			C5	G1/4			
			C6	1/2NPT			
			C7	1/4NPT			
			C8	ZG1/4			
			P	Flat Membrane /clamp			
			X	Customized			
				Code	I/O Outlet		
				B1	Big Hirschmann Connector		
				B2	Small Hirschmann Connector		
				B3	Direct cable(1.5M standard)		
				X	Customized		
					Code	Pressure reference	
					G	Vent Gauge	
					A	Absolute	
Example:							
HPT-6	10B	E	J2	C3	X	G	
HPT-6	10Bar	4-20mA	0.25%	G1/2	Customized	Gauge	
Model Choose:HPT-6-10B-EJ2C3XG							

### Outline Drawing:



### Electric Circuit:



Pin	2-Wire (Current)
1	V <sub>supply+</sub> (V <sub>s+</sub> )
2	V <sub>supply-</sub> (V <sub>s-</sub> )
3	NC

Pin	3-Wire (Voltage)
1	V <sub>supply+</sub> (V <sub>s+</sub> )
2	V <sub>output+</sub> (V <sub>o+</sub> )
3	GND

### Pressure Port Dimension:

Code	Pressure port	"L" (mm)
C1	M20*1.5	16
C2	M14*1.5	14
C3	G1/2	16
C4	G3/8	
C5	G1/4	12
C6	1/2NPT	
C7	1/4NPT	13.8
C8	ZG1/4	13.8