

HuaTian

HPT-2

Instruction:

HPT-2 digital pressure transmitter uses piezoresistive OEM pressure sensor as sensing element, which amplifier circuit transforms sensor signal into standard output signal. Through long-term aging and stability testing, the whole Product's performance is stable and reliable. The transmitter with 2-wire 4~20mADC output and local display indicator could be widely used on pressure measure in rugged environment, petroleum, chemi-industry, etc.

Features:

- 4 digit LCD Display
- Fully digital signal processing
- Strong Compatibility
- Adjustable Zero and Span
- Local display

Applications:

- Hydraulic/Pneumatic Control Systems
- Energy and Water Management
- Automation equipment
- Process control
- Oil and gas



Specifications(Refer to 25°C)

Sensor Type	Piezoresistive	Operable Temp. (°C)	-20~85°C
Wetted parts	316L Stainless steel	Storage Temp (°C)	-20°C ... 125°C
Housing	Aluminum alloy	Long term stability(annual)	±0.25%FS(Typical)
Sealing method	O-ring	Zero error (%FS)	±0.5%
Damping	Adjustable	Full range error (%FS)	±0.5%
Protection grade	IP66	Thermal Zero drift (%FS) *	±2.0%
Pressure port	See below code description	Thermal Span drift (%FS) *	±2.0%
Accuracy (Combined Non-linearity, Hysteresis and Non-repeatability) %FS	0.5%(Typical),0.25%,0.1%	Input Voltage / Output	See below code description
		Response	1KHz
Pressure Range(Bar)	0~0.1.....600bar	Insulation	Min1MΩ @250VDC&25°C
		Shock	100g, 11msec
Over pressure	3X Full Range	Noise	< 2m VRMS
Burst pressure	4X Full Range or 20kpsi which is less	Pressure reference	Absolute /Vent Gauge/ Seal Gauge
Life	>10 ⁷ Full Range Pressure	Weight	950g Max.

* Thermal drift refer to 25°C output

HuaTian

HPT-2

HPT-2 pressure transducer model code

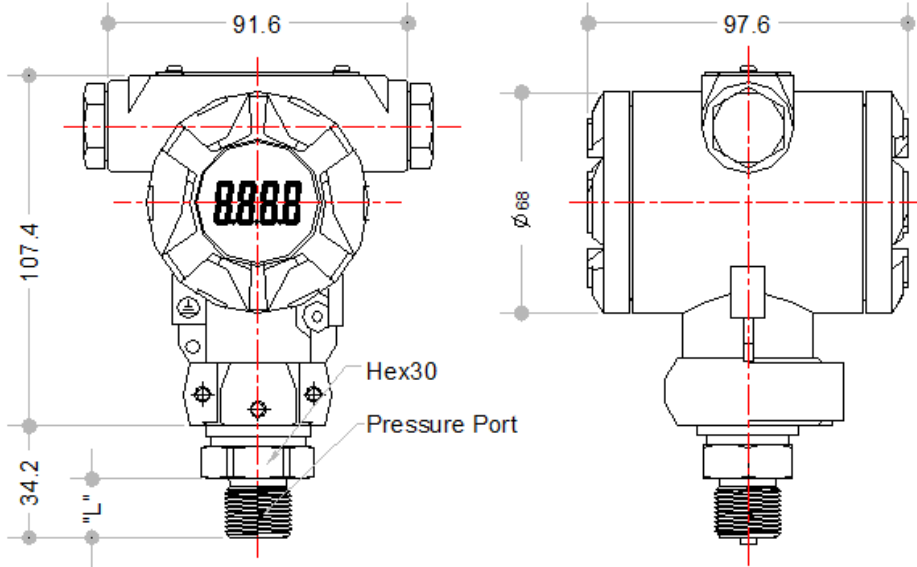
Model	Description							
HPT-2	Digital industrial pressure transmitter							
	Range/Code	Pressure unit						
	0-X P	Pa						
	0-X K	Kpa						
	0-X B	Bar						
	0-X M	Mpa						
	0-X S	PSI						
	0-X m	Mh2o						
	Code	Output Signal						
	E	4-20mA two- wire						
	Z	others						
	Code	Accuracy (%FS)						
	J1	0.1						
	J2	0.25						
	J3	0.5						
	Code	Pressure port						
	C1	M20*1.5						
	C3	G1/2						
	C4	G3/8						
	C5	G1/4						
	C6	1/2NPT						
	C7	1/4NPT						
	C8	ZG1/4						
	X	Customized						
	Code	I/O Outlet						
	B1	Cable direct						
	X	Customized						
	Code	Pressure reference						
	G	Vent Gauge						
	A	Absolute						
	Code	Others						
	M1	LCD						
	M2	LED						
	B	EXIAII CT6						
	G	EXIAII CT6 Gb						

Example

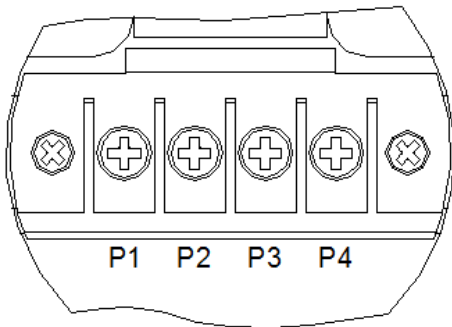
HPT-2	10B	E	J2	C3	X	G	M1B	
HPT-2	10Bar	4-20mA	0.25%	G1/2	Customized	Gauge	LCD	

Model Choose:HPT-2-10B-EJ2C3XGM1B

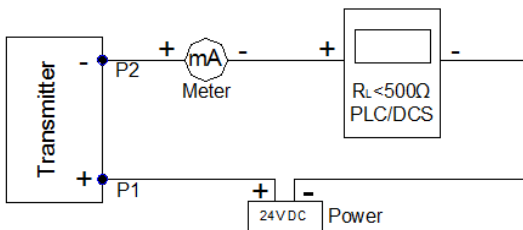
Outline Drawing:



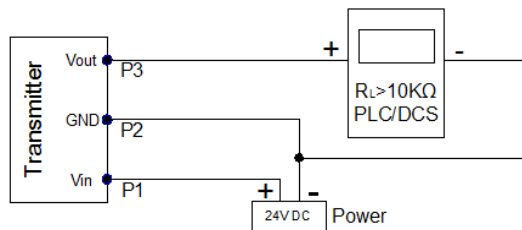
Electric Circuit:



Pin	2-Wire (Current)
1	Vsupply+ (Vs+)
2	Vsupply- (Vs-)
3	NC
4	NC
Pin	3-Wire (Voltage)
1	Vsupply+ (Vs+)
2	GND
3	Voutput+ (Vo+)



Output: 4-20mA



Output: 1-5V

Pressure Port Dimension:

Code	Pressure port	"L" (mm)
C1	M20*1.5	16
C2	M14*1.5	14
C3	G1/2	16
C4	G3/8	
C5	G1/4	12
C6	1/2NPT	
C7	1/4NPT	13.8
C8	ZG1/4	13.8