

HuaTian

HPT-1

Instruction:

HPT-1 pressure transmitter with local display can be used for a wide variety of applications .The transmitter offers 3 1/2 LCD /LED display with the full capabilities of a high accurate 4-20mA 2-wire system design. Through strict component making, semi-finished product and all -finished product testing and aging, the transmitter is stable and reliable, having excellent flexibility , sensitivity and diversity .

Features:

- 3 1/2 LED/LCD Display
- Compact Outline, Easy installation
- Strong Compatibility
- Adjustable Pressure Unit
- Local display

Applications:

- Hydraulic/pneumatic Control Systems
- Energy and Water Management
- Automation equipment
- Process control
- Chemical



Specifications(Refer to 25°C)

Sensor Type	Piezoresistive	Operable Temp. (°C)	-20~85°C
Wetted parts	316L Stainless steel	Storage Temp (°C)	-20°C...125°C
Housing	304 Stainless steel	Long term stability(annual)	±0.25%FS(typical)
Sealing method	O-ring	Zero error (%FS)	±0.5%
Protection grade	IP65	Full range error (%FS)	±0.5%
		Thermal Zero drift (%FS) *	±2.0%
Pressure port	See below code description	Thermal Span drift (%FS) *	±2.0%
Accuracy (Combined Non-linearity, Hysteresis and Non-repeatability) %FS	0.5%(Typical),0.25% ,0.1%	Input Voltage / Output	See below code description
		Response	1KHz
Pressure Range(Bar)	0~10Kpa...600Bar	Insulation	>1MΩ @250VDC&25°C
		Shock	100g, 11msec
Over pressure	3X Full Range	Noise	< 2m VRMS
Burst pressure	4X Full Range or 20kpsi which is less	Pressure reference	Absolute /Vent Gauge
Life	>10 ⁷ Full Range Pressure	Weight	300g Max.

* Thermal drift refer to 25°C output

HuaTian

HPT-1

HPT-1 pressure transducer model code

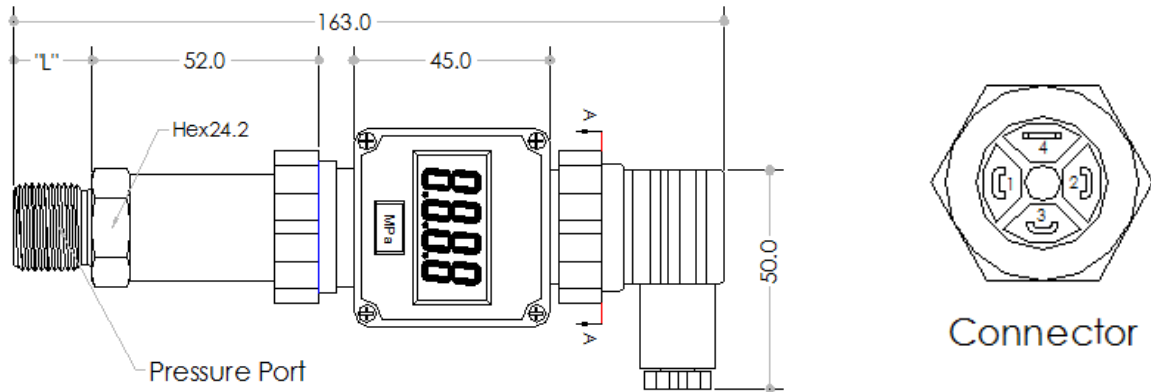
Model	Description	
HPT-1	Digital Pressure Transmitter	
	Range/Code	Pressure Unit
	0-X P	Pa
	0-X K	Kpa
	0-X B	Bar
	0-X M	Mpa
	0-X S	PSI
	0-X m	mH2O
	Code	Output Signal
	E	4-20mA two wires
	Z	others
	Code	Accuracy (%FS)
	J1	0.1
	J2	0.25
	J3	0.5
	Code	Pressure port
	C1	M20*1.5
	C2	M14*1.5
	C3	G1/2
	C4	G3/8
	C5	G1/4
	C6	1/2NPT
	C7	1/4NPT
	C8	ZG1/4
	P	Flat Membrane /clamp
	X	Customized
	Code	I/O Outlet
	B1	Big Hirschmann Connector
	X	Customized
	Code	Pressure Reference
	G	Vent Gauge
	A	Absolute
	Code	Display
	M1	LCD
	M2	LED

Example:

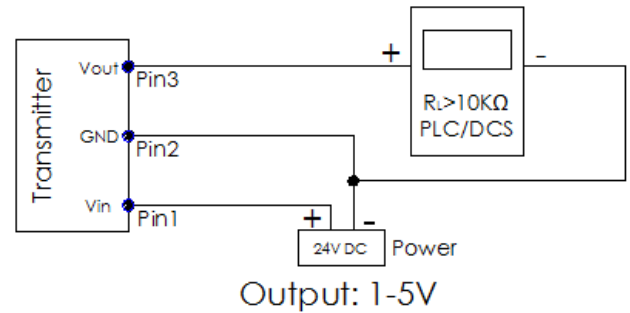
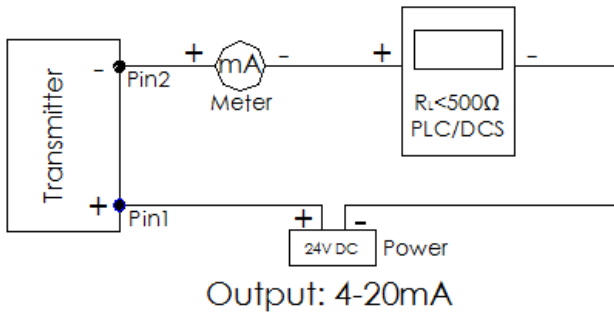
HPT-1	10B	E	J2	C3	X	G	M1	
HPT-1	10Bar	4-20mA	0.25%	G1/2	Customized	Gauge	LCD	

Model Choose:HPT-1-10B-EJ2C3XGM1

Outline Drawing:



Electric Circuit:



Pin	2-Wire (Current)
1	V _{supply+} (V _{s+})
2	V _{supply-} (V _{s-})
3	NC

Pin	3-Wire (Voltage)
1	V _{supply+} (V _{s+})
2	V _{output+} (V _{o+})
3	GND

Pressure Port Dimension:

Code	Pressure port	L (mm)
C1	M20*1.5	16
C2	M14*1.5	14
C3	G1/2	16
C4	G3/8	
C5	G1/4	12
C6	1/2NPT	
C7	1/4NPT	13.8
C8	ZG1/4	13.8